



**2 & 3 BHK APARTMENTS**  
IN NORTH BANGALORE

**DEVELOPERS**



No. 42/1, Dickenson Road, Bangalore - 560 042  
Tel.: +91 80 2556 6680 / 90 Fax: +91 80 2556 6684 Mobile: +91 9008300600  
Email: [info@richlivingspaces.com](mailto:info@richlivingspaces.com) Website: [www.richlivingspaces.com](http://www.richlivingspaces.com)

**ARCHITECTS**





2 & 3 BHK APARTMENTS

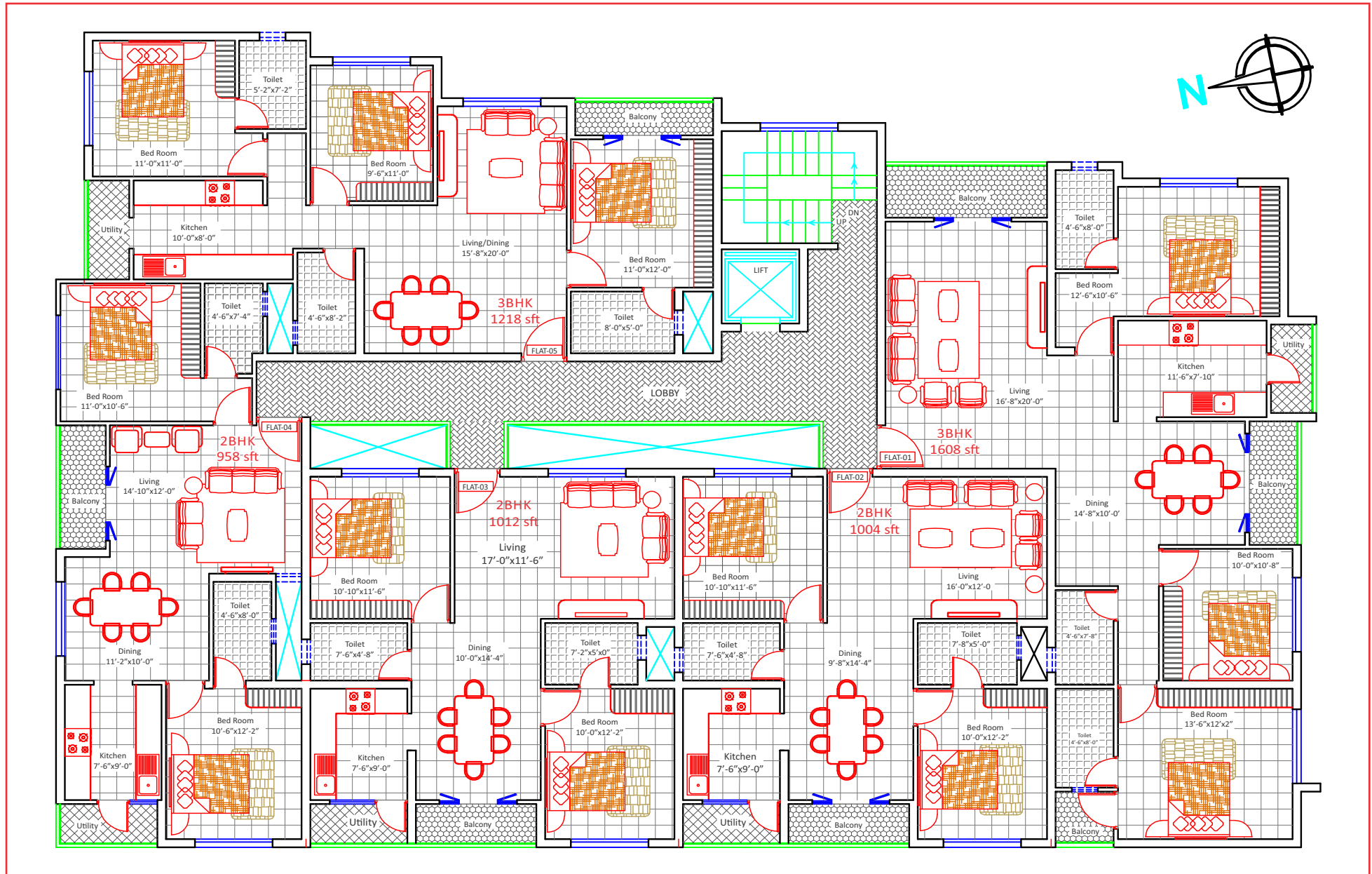


Kacharakanahalli, Bangalore

# Google Map



# Typical Floor Plan



## **SPECIFICATIONS**

**STRUCTURE** : RCC framed structure with columns and beams, walls of bricks or concrete blocks with both sides plaster.

### **FLOORING**

a) Drawing/Dining

and Bedrooms : Vitrified Tiles

b) Balconies : Ceramic Tiles

**DOORS/WINDOWS** : Premium quality skin pressed doors and three track sliding aluminum windows.

**BATHROOMS** : Walls dadoed with ceramic/vitrified tiles to the ceiling with EWC and wash basin.

**ELECTRIFICATION** : All copper concealed wiring with branded Switches. All bedrooms will have two-way switches with full control at the bed-side.

**INTERCOM** : Intercom system will be provided connecting each flat to the security room.

**T.V. & TEL POINT** : T.V. & telephone points will be provided in living / master bedroom.

**PAINTING** : Internal walls will be premium emulsion or Apex.  
Outer walls finished with waterproof cement paint.

**KITCHEN** : Two feet high dadoing of ceramic/vitrified tiles with anti skid ceramic tiled flooring. Gas pipeline to each apartment.  
Water inlet/outlet & power points for the washing machine in the utility area. Necessary electric points for water purifier, mixer, grinder and oven.

## **COMMON FACILITIES**

**LIFT** : Seven Passengers branded lift.

**ENTRANCE LOBBY** : Entrance lobby, staircases and lobbies at every floor will be finished in good quality granite.

**GENERATOR** : Stand-by generator for lighting in the parking, corridors, lobby & 100% power back-up for residences and lift.

**ECO FRIENDLY** : Rain water harvesting and motion sensor switches in the staircase.

**WATER SUPPLY** : Overhead and underground water tank with electric pump from bore well water source.

**LANDSCAPING** : All available areas will be aesthetically landscaped by specialists in the field.

**WASH ROOM** : Toilet & bathroom for drivers in the parking area.

## Know your neighbourhood

### Location

MG Road - 5 Kms  
Jalvayu Vihar/ Kammanahalli - 0.5 Kms  
ITC Info tech - 2 Kms  
Manyata Tech Park - 3 Kms  
Railway station - 2 Kms  
Proposed Metro - 3 Kms  
International Airport - 24 Kms

### Shopping Centres

HBR BDA Complex  
Kammanahalli High street  
MS Ramaiah North City  
Esteem Mall  
Elements Mall (Opening shortly near Nagawara)

### Hospitals

Columbia Asia  
Baptist Hospital  
Abitha Hospital } Kalyan Nagar  
Specialist Hospital }

### Schools & Colleges

Royal Concorde International School  
Mohre Public School  
NICC - International College of Media & Design  
SSR Business School  
New Millennium School  
St. Vincent Palloti School  
Indian Academy Degree College  
CMR College  
HKBK College of Engineering  
Bangalore International School  
Delhi Public School

